

2023 ANNUAL REPORT

2018
Annual Report



Sanford, NC



2019
ANNUAL REPORT



2021
ANNUAL REPORT

2020
ANNUAL REPORT



2022
ANNUAL REPORT

MEET THE STAFF



Jimmy Randolph

CEO

jrandolph@growsanfordnc.com



Bob Joyce

Senior Director, Economic Development

bjoyce@growsanfordnc.com



Todd Tucker

Economic Development Director

ttucker@growsanfordnc.com



Crystal Gaddy

Business Retention & Expansion Manager

cgaddy@growsanfordnc.com



Susan Gomez

Chamber of Commerce Director

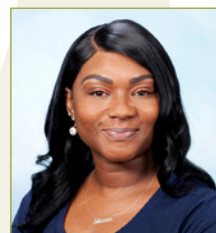
sgomez@growsanfordnc.com



Morgan Barbour

Operations & Events Manager

mbarbour@growsanfordnc.com



Shinita Williams

Membership Services

frontdesk@growsanfordnc.com

SAGA BOARD OF DIRECTORS

Thank you to our leadership for your support and continued engagement. Your vision and critical guidance have an impact that will last for generations to come. Together we envision a thriving economic community here in Lee County.

Officers and Executive Members

Jimmy Keen, Chair	Richard Oldham, Vice Chair	Bill Wilson, Secretary
Charlie Welborn, Treasurer	April Montgomery, Past Chair	

Executive Committee

Donald Andrews	Kirk Bradley	Bill Carver
Tina Gross	Jimmy Keen	Carter Keller
April Montgomery	Donnie Oldham	Richard Oldham
Jerry Pedley	Margaret Robertson	Rebecca Salmon
Kirk Smith	Charlie Welborn	Bill Wilson

Board Members

Jody Albright	Todd Baker	David Bernard
Otto Breitschwerdt	Byron Buckels	Dr. Lisa Chapman
Joe Clancy	Tom Darden	Alan Dossenbach
Dr. Chris Dossenbach	Indira Everett	Chris Fensterle
Dr. Jim Foster	John Godfrey	Scott Hadley
Hal Hegwer	Bob Heuts	Steve Malloy
Chet Mann	Joni Martin	Brian McRae
Charles Mellette	Lisa Minter	Ella Pantaleon
Julian Philpott	Jay Rapp	Dr. Bill Stone
Rich Trogon	Sherry Lynn Womack	



THE SAGA CONTINUES...

The Sanford Area Growth Alliance formally launched its visionary economic development program nearly ten years ago, and by any measure, the effort has been a phenomenal success. Thousands of good new jobs announced, well over a billion dollars invested in new industrial capacity, and a tax base that has expanded by more than 75 percent over a span of just nine fiscal years.

And the positive impacts of this growth extend far beyond the walls of the new manufacturing facilities at Central Carolina Enterprise Park and along Colon Road. The commercial and residential sectors are growing apace – local sales tax revenues have more than doubled since 2014, and record numbers of residential units are currently under construction around Lee County.

The ripple effects of a dynamic and growing local economy are reflected in rising property values, which, along with the expanded tax base, yield lower property tax rates for city and county residents. In fact, the combined city/county property tax rate has declined by \$0.23 since 2018. SAGA has made significant progress in its mission to increase prosperity for all the residents of Sanford, Broadway and Lee County, and it might seem tempting to pat ourselves on the back, congratulate ourselves for a job well done, and relax for a while.


But the visionary community leaders who founded SAGA remember more challenging times. They remember the days of rising tax rates, 14% unemployment, and hundreds of lost jobs annually. They remember the many meetings and phone calls and long days and nights spent strategizing and planning and preparing. They remember the days when the phones weren't ringing, industrial buildings stood empty and dozens of houses were languishing in the MLS.

Those leaders understand that vibrant, successful, livable communities must continue to grow in order to survive, and they also understand that sustaining positive growth requires tireless and never-ending effort. In other words, the work of SAGA is never done.

Years of foresight and deliberate, strategic effort by SAGA stakeholders, investors and staff have brought us to this moment. This is the growth we envisioned, the growth we planned and prepared for. If we remain committed to the principles that got us to this point and recommit ourselves to this extraordinary community partnership, we can maximize the positive impact of these jobs of the future and massive capital investment on the lives of Lee County residents and businesses alike.

Meaningful collaboration, long-term planning, innovative thinking and strategic reinvestment are the hallmarks of our community's recent success, and with your continued partnership and investment, they will be the essential elements of our future success as well.

Sincerely,






Jimmy Randolph
CEO
Sanford Area Growth Alliance



GOAL: MARKET LEE COUNTY

SAGA's use of internal and external marketing tools targeted customers and stakeholders. Outreach marketing partnerships such as Regional Triangle Regional Partnership, the Carolina Core and co-op programs through the Economic Development Partnership of North Carolina as well as direct mail have also proven to be a successful method of advertising/promotion, especially with site consultants. The goals are continued communication on SAGA efforts and accomplishments, branding Lee County to external interests, and engaging members and the community on strategies for growth and Lee County prosperity.

STRATEGIES:

-  Create common community vision for economic development
-  Maintain strong Investor, Member and Stakeholder relations
-  Continue external marketing to promote area as a destination and business location

MEASURES:

SAGA newly designed website deployed 4th quarter 2022



2022 - 2023 Marketing Events

International Battery Show	North Carolina Economic Developers Association Spring Conference
Site Selection Guild Annual Meeting	North Carolina Economic Developers Association Annual Meeting
Carolina Core Consultant Dinner at Site Selection Annual Meeting	North Carolina Economic Developers Association Annual Meeting partners outing
Select USA	BIO International
Site Selection Guild Fall Conference	North Carolina Economic Developers Association Networking Luncheon
Research Triangle Regional Partnership Greenville consultant trip	Shell Building Open House
Economic Development Partnership of North Carolina Detroit consultant dinner	

SAGA is connected!

www.growsanfordnc.com
Electronic Mailing: Weekly Digest



Regular Features:



Featured In:



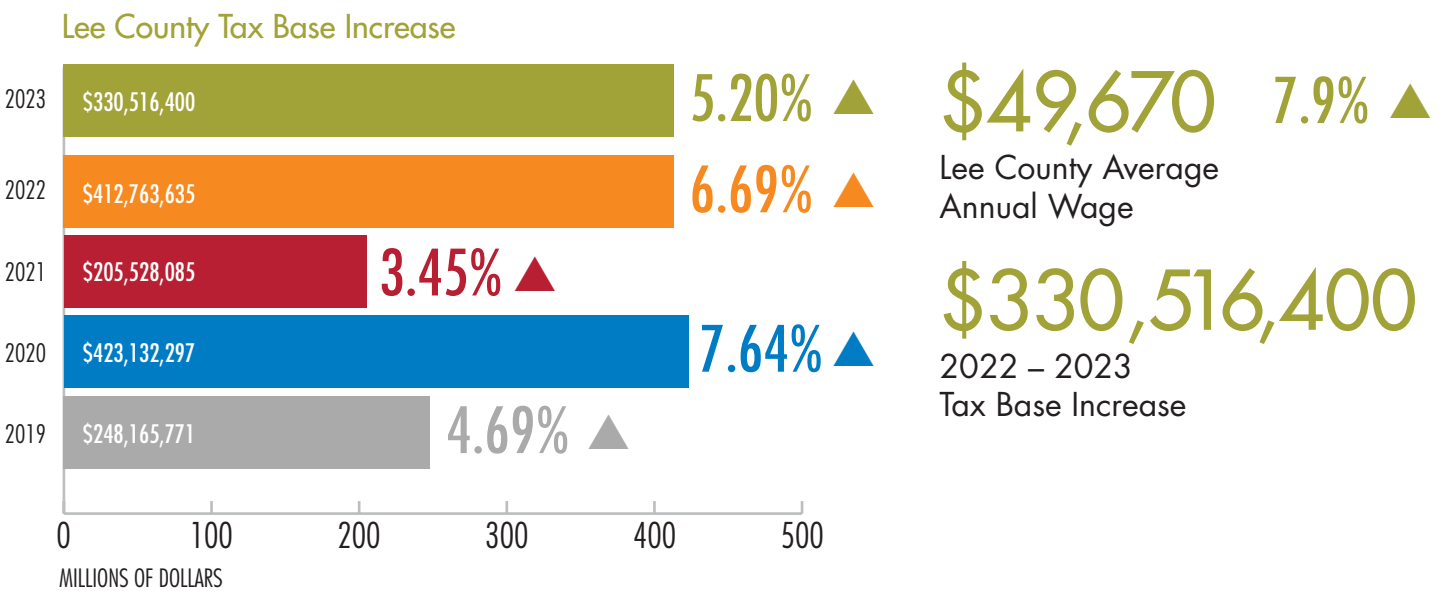
GOAL: NEW BUSINESS RECRUITMENT

As the lead agency for new business recruitment, SAGA has utilized its increased resources to build stronger relationships with site consultants, state recruiters and industry decision-makers. These improved contacts have increased project activity by 47% in three years. Going forward, SAGA’s more robust recruitment budget will ensure a competitive effort commensurate with rival communities.

STRATEGIES:

- Actively market Lee County for business recruitment
- Focus external marketing resources on the following Target Sectors: customers and suppliers of Megasite tenant and existing businesses; advanced manufacturing; life sciences; defense technologies; energy; and agriculture and related business sectors.
- Support retail recruitment
- Ensure competitiveness of recruitment efforts

MEASURES:



PlantSwitch, Revolutionizing the Foodservice Experience

PlantSwitch turns plants into plastic. Our technology uses cellulose from agricultural byproducts to create a plastic alternative resin that is compostable, high-performance, low-carbon, and low-cost. We recently launched a facility in Sanford, NC that has over 50 million pounds of annual production capacity and are working with multiple Fortune 500 clients to replace plastic throughout their supply chain. Our resin works with existing plastic equipment, so manufacturers have a seamless transition when using our material. Our goal is to turn over one billion pounds of plants into plastic over the next decade.



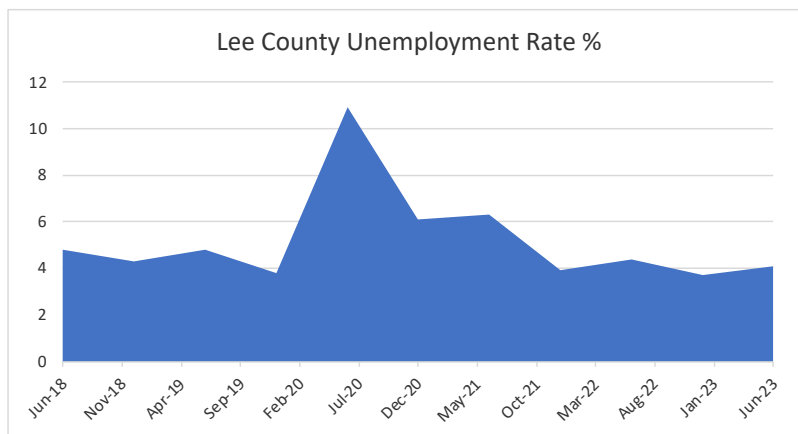
GOAL: RETAIN AND EXPAND EXISTING INDUSTRY

SAGA advocates for a strong pro-business climate that supports existing business, provides timely and valuable information, fosters communication and connects local business with necessary resources.

STRATEGIES:

- Actively support expansions and retention
- Advocate for business climate and policy changes that will support existing industry
- Foster industry synergy by building relationships and community engagement to continue effective communication channels
- Hire dedicated Business Retention and Expansion Manager (Crystal Gaddy hired in June, 2023)
- Implement a Customer Relationship Management (CRM) (Acquired in FY23-24)

MEASURES:



60.7%

Lee County

Labor Force Participation 2023

U.S. Labor Participation rate 63.2%
(US Bureau of Labor Statistics)

Industry Expansion

Bharat Forge Expansion: Adjacent to their current facility, construction is underway on the addition shown below. The new building will be 150,000 sq. ft. with an estimated completion date 4th quarter of 2024 bringing new jobs to the site.

BHARAT FORGE



Caterpillar: Celebrating
25 years in Lee County,
October 2023

CATERPILLAR®

Pfizer: Expanded to the
former Abzena facility in
CCEP, "Pfizer North"



GOAL: PRODUCT DEVELOPMENT



Central Carolina Enterprise Park and CCEP Shell Building #3

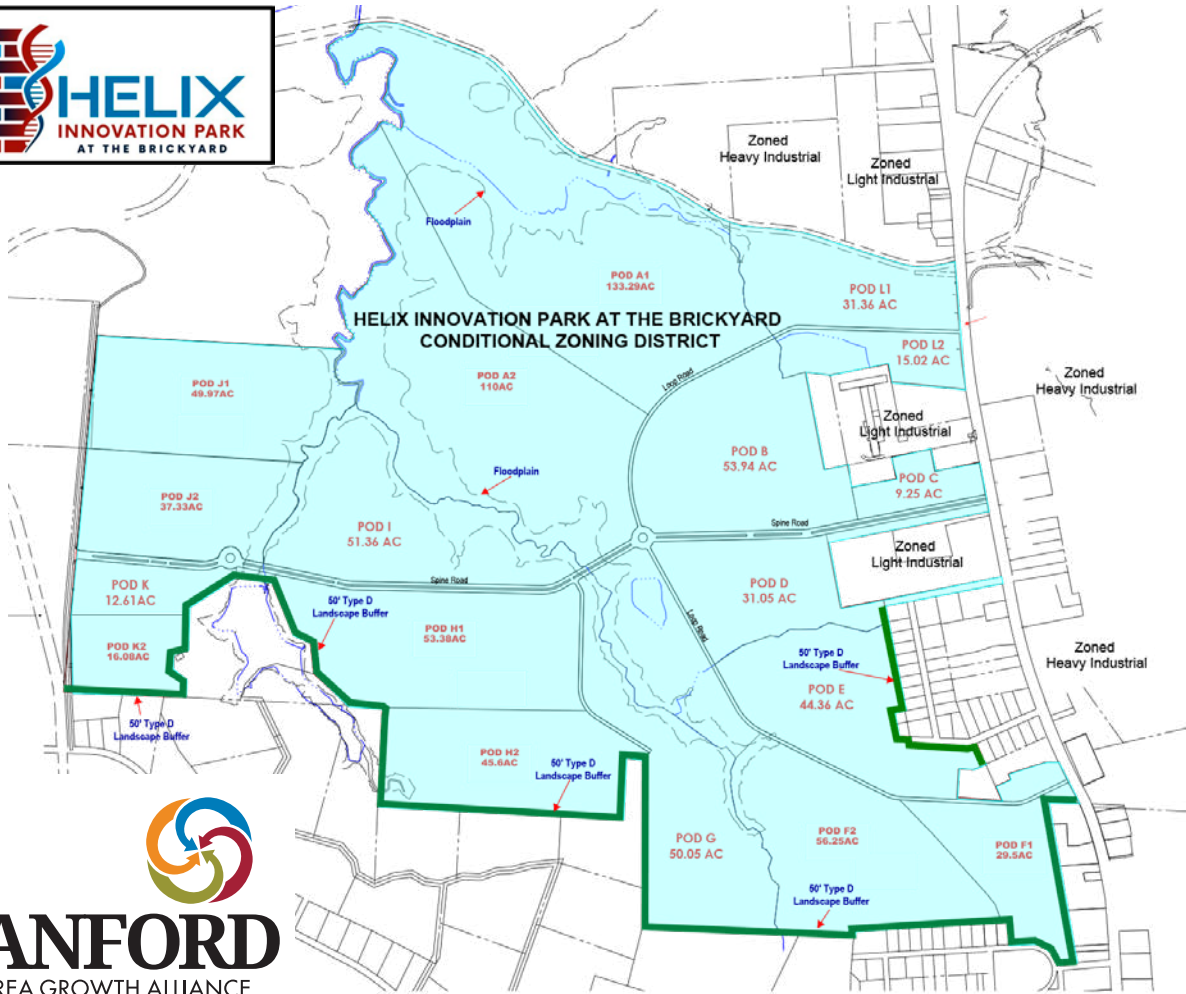
Central Carolina Enterprise Park (CCEP) remains SAGA's most ready industrial location, with abundant utilities on site, and a Class A Shell Building now available and ready for upfit on Lot 6. Built by Samet Corporation, Sanford's newest product is a +/- 117,185 sq. ft. spec building, expandable to +/- 234,318 sq. ft. Built on Lot 6, in the heart of CCEP, the building has direct access to U.S. Highway 1, a four-lane expressway (70 mph) connecting RDU International Airport and the Research Triangle Park (35 minutes) to the north and Pinehurst and Fort Bragg (40 minutes) to the south. Neighbors at CCEP include Astellas, Pfizer, Abzena (now Pfizer North) and Liberty Tire. With utilities already in place and permitting complete, Spec Building #3 is perfect for: (1) Manufacturing / R&D and (2) Warehousing / Distribution.

Helix Innovation Park at the Brickyard

This 895-acre assemblage is strategically located on the west side of US Hwy 15-501, just across from Pfizer's main employee entrance and mere minutes from the US Highway 1 expressway. Inspired by the success of nearby Central Carolina Enterprise Park, the owners envision a diverse and well-amenitized industrial park, designed and purpose built for Advanced Manufacturing, Life Sciences and other compatible economic development projects. After SAGA and other community stakeholders partnered with Duke Energy, Global Location Strategies and the Perry family in 2020 to assess the site's potential through the Duke Site Readiness Program, Helix Ventures and the Trustwell Group acquired and expanded the park to its present dimensions. SAGA and the owners have submitted the site for multiple potential projects, and it is anticipated that the first tenant will be announced soon.

Regional Crossroads Park

At over 600 acres, Regional Crossroads Park offers options for a wide range of industrial projects and could potentially accommodate more than 2 million square feet of Class A industrial space. The property, located immediately adjacent to US Hwy 1 and the Raleigh Executive Jetport, was assembled by Matt Stephens and has been annexed by the City of Sanford and rezoned for light industrial use. North Carolina-based Trinity Capital has partnered with the owner to complete the due diligence process and is marketing the site for various industrial project opportunities, including suppliers associated with the transformative industrial projects located at nearby Megasites. SAGA is working closely with the Trinity Capital team to support the development of the site and to identify suitable project opportunities.



PLANNED FOR ADVANCED MANUFACTURING, LIFE SCIENCES & ECONOMIC DEVELOPMENT PROJECT SITES

Strategically Located + Robust Infrastructure	<ul style="list-style-type: none"> • 10 – 100+ acre pods available less than 40 minutes from RTP & RDU • Minimal density restrictions and unlimited building height • Direct access to US-1, US-421, I-685 and rail • Unmatched sewer, water, gas and electrical capacity
Speed to Market	<ul style="list-style-type: none"> • Industrial in place by right • Expedited & predictable development process • Groundbreaking in as little as two months from submittal
Strong Access to Talent	<ul style="list-style-type: none"> • Deep existing talent pool • Regional universities, community colleges & military programs
All Diligence Completed	<ul style="list-style-type: none"> • Due diligence completed with no environmental issues, little stream or wetland limitations and suitable subgrade conditions for support of highly loaded structures

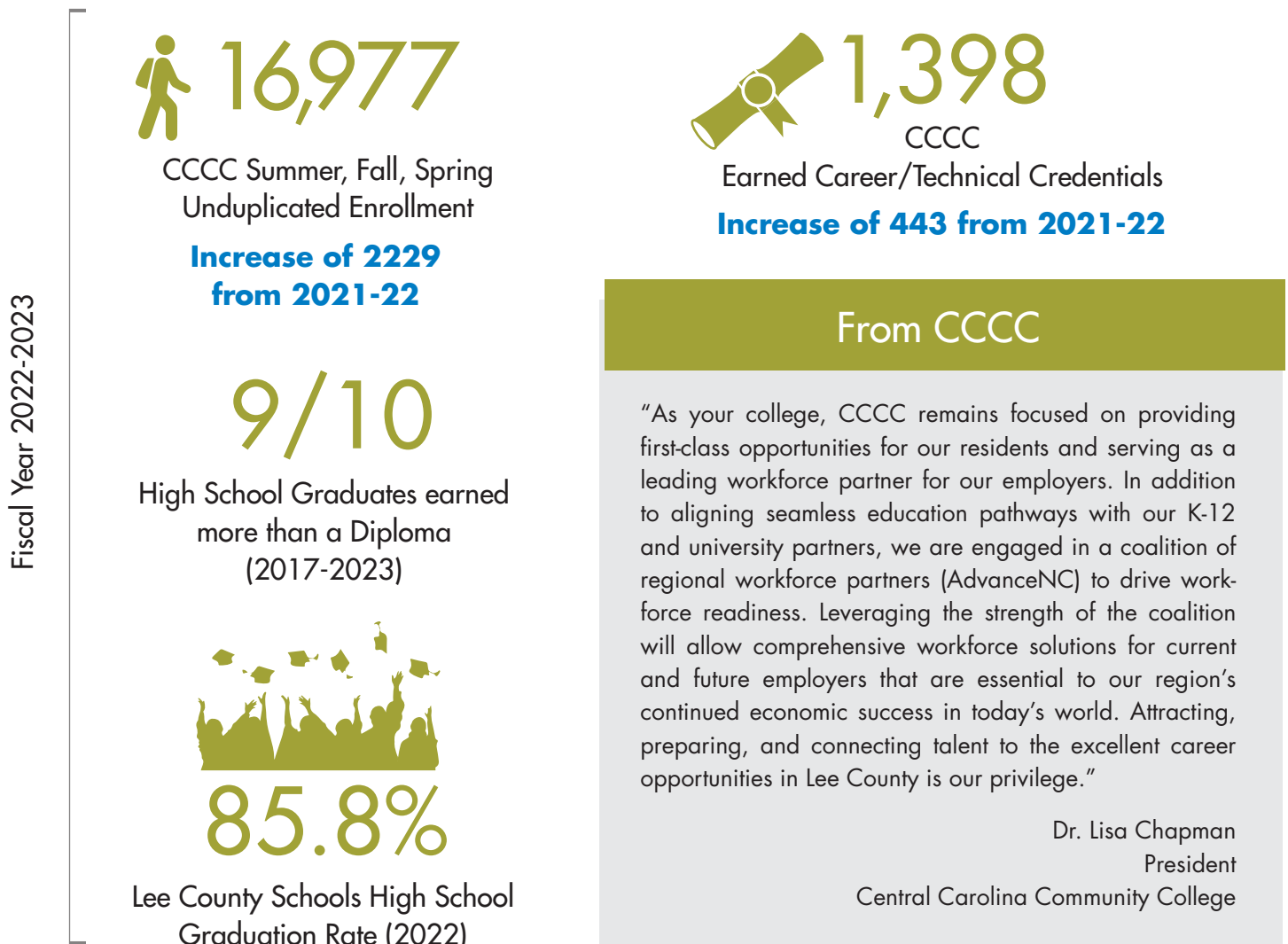
GOAL: EDUCATION AND WORKFORCE DEVELOPMENT

Continue to lead a community-wide collaboration to grow and train a 21st Century workforce, advocating for superior public schools, promoting integration of “learn and earn” experiences and facilitating communication between the business community and all education stakeholders.

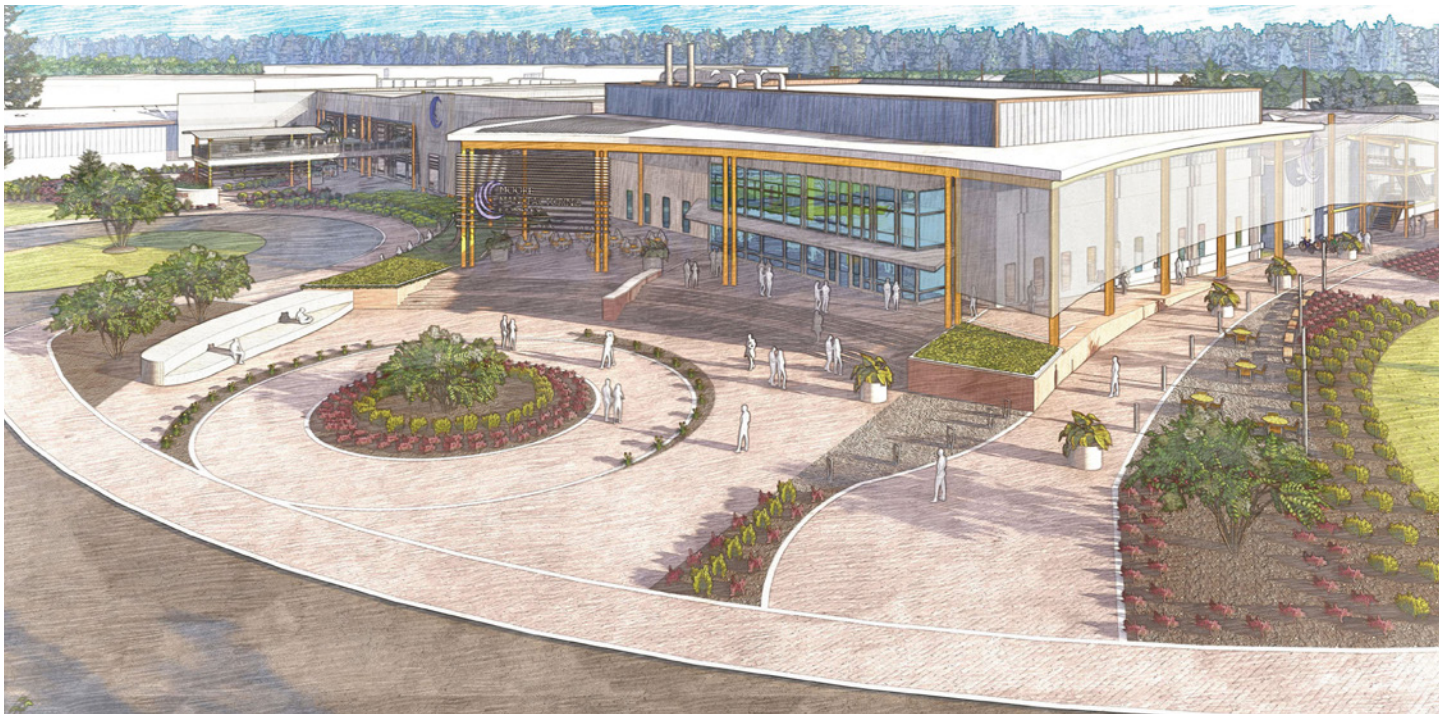
STRATEGIES:

- Support Central Carolina Works and other educational programs to develop a ready workforce through initiatives such as K-14, apprenticeships and STEAM programming
- Proactively anticipate emerging workforce needs and facilitate a connection between relevant or critical partners for business and education partnerships
- Identify workforce development needs and initiatives

MEASURES:



E. EUGENE MOORE MANUFACTURING AND BIOTECH SOLUTIONS CENTER



Update on the Moore Center

CDL classes were actively operating on-site at the CDL building this summer, with 50 graduates to date and a 96 percent NC DMV pass rate. Also, this summer, phase one planning began for the Manufacturing building, which focuses on industry services, partner engagement, welding, and HVAC programs. The Moore Center will host a National Manufacturing Day event on October 6, 2023. The Biotechnology building, with 10,000 sq. ft. designed with our biomanufacturing employer partners, is upcoming in Spring 2025.

CCCC Highlights for Workforce

- **The 2022-23 CCCC Customized Training impact includes \$1.9M in project approvals, 170 training activities, and 823 employees trained.**
- **Business & Industry Leadership Team – Biotechnology:** The first Biotechnology networking session was held thanks to a business-led effort to support workforce and program development aligned with industry needs. The event was led by Brad Mickey, Astellas Gene Therapeutics, and supported by CCCC Biotechnology Department Chair Dr. Lisa Smelser.
- **Central Carolina Community College offers a Customized Training Industrial Robotics Technician course.** Seven employees from Bharat Forge are participating in the initial 40-hour class. Bharat Forge currently uses over 20 robots in their processes – and this class allows company personnel to train on a similar robot without interrupting critical production demands.
- **The Sanford Contractors Summer Apprenticeship:** This summer pre-apprenticeship “learn and earn experience” was designed to help area high school students seriously interested in construction get hands-on experience and a taste for what a career in the industry might be like. A partnership with Central Carolina Community College, Lee County Schools and Sanford Contractors, the program combined classroom instruction with paid, on-the-job training. Eleven students successfully completed this pilot program.

LEE COUNTY SCHOOLS - AIMING HIGH

Building Skills and Launching Careers in High School



Lee Early College – Accelerating College Degrees For High School Students

Lee Early College has been named one of the nations' 2023-24 BEST HIGH SCHOOLS by U.S. News. The school has received this accolade for nine years. Currently 275 students are enrolled in the advanced public high school. LEC is an integral part of the talent pipeline in Lee County and has been since 2006. Industry realizes the talent and high skilled workforce available here in our community because of the hard work of programs and facilities like Lee Early College.



NAF Career Academies – Engineering, Finance, Hospitality and Tourism, and Life Science

Four National Academy Foundation (NAF) Career Academies are offered at both Lee County and Southern Lee High Schools. Functioning like schools within schools, the Academies provide each student with potentially life-changing career exploration opportunities at high-performing companies like Lenovo, Optum, Cisco, Dell and Mertek Solutions.

NAF Academy students are immersed in a rigorous industry-validated, career-themed curriculum that incorporates current industry best practices and standards, literacy strategies and STEM integration. Instruction is delivered with cross-curricular collaboration, establishing connection across all subject areas and consistently linking back to practical career applications.



Central Carolina Works – Harnessing the Power of Good Advice

Central Carolina Works (CCWorks) leverages the power of public-private partnerships to accelerate student's paths to a rewarding career, activating their pursuit of a certificate, diploma or degree while still in high school. Through public and private sector support, CCWorks advisors are placed in Chatham, Harnett and Lee County public high schools to work with students, parents, faculty and administrators. They educate students about traditional post-secondary educational programs which can now be pursued by students while still in high school, yielding meaningful skills and credentials to give students a career head start upon graduation from high school.

From Lee County Schools

"We continue to make progress within our district, and we are excited about the ongoing partnerships with our local business community. By joining forces, we will continue to create an environment where education and enterprise thrive, propelling our community towards an even brighter future. Education is not just an investment in our children's future but also the cornerstone of economic development in our community."

Chris Dossenbach, Ed.D
Interim Superintendent
Lee County Schools

GOAL: CHAMPION SMALL BUSINESS GROWTH AND EXPANSION

SAGA assists emerging and growing companies through the Chamber of Commerce by providing value-added benefits, such as networking and B2B efforts for its 500+ members. SAGA continues support of the CCCC Small Business Center, partnering with other critical organizations to assist our community's businesses in building connections to resources and advocating for business-friendly public policy.

STRATEGIES:

- ☪ Maintain Chamber program to provide benefits to enhance and grow small business
- ☪ Facilitate a support program for entrepreneurs
- ☪ Advocate for funding resources and connect with new and existing businesses

MEASURES:

516
Chamber Membership
June 30, 2023

Enhancing, Supporting & Advocating:

Chamber Of Commerce Ambassador Program: 15 Ambassadors volunteering 375 Hours at Chamber events such as AM Buzz, Business After Hours, Public Policy Luncheons, and Chamber Clays

Ribbon Cutting

The Chamber of Commerce celebrated new businesses or office relocations for:

- A Toda Madre
- Brantley Place by Smith Douglas Homes
- Bridany Cakes
- Care Carriers
- Everything Pines Partners
- H & R Block – 3rd Location
- Mine & Yours Bridal
- Pinehurst Medical Clinic
- Pop Heaven Gourmet Popcorn & Sweet Shop
- Sanford Brush & Palette Club Office
- Sessoms Realty Group
- United Way of Lee County Office
- 78 North by McKee Homes
- 78 South by Smith Douglas Homes



Fiscal Year July 1, 2022 – June 30, 2023

Chamber Children's Business Fair: Supporting Lee County's young entrepreneurs

On Saturday, October 15, 2022, the third annual Chamber Children's Business Fair hosted eighteen businesses owned by Lee County's children in downtown Sanford. We welcomed over four hundred patrons that supported our youngest and brightest entrepreneurs.

The success of the Chamber's Children's Business Fair has allowed SAGA to continue to host this event annually. Visit our talented and business savvy young entrepreneurs at our next Children's Business Fair on Saturday, October 21, 2023.



RISE: Real Investment in Sanford Entrepreneurs

An eight-class program designed to help entrepreneurs launch local businesses in Sanford, participants learn concepts, practices and tools to increase their chances for success. One participant is selected and awarded a \$5,000 grant to help start his or her business concept.



This fiscal year we had two cohorts, and the grant recipient winners were Sankofa Pediatric Therapy and Gather NC. Since the start of RISE in 2020, there have been fifty-five participants with a total of 13 businesses starting and creating 34 jobs in Sanford/Lee County area.



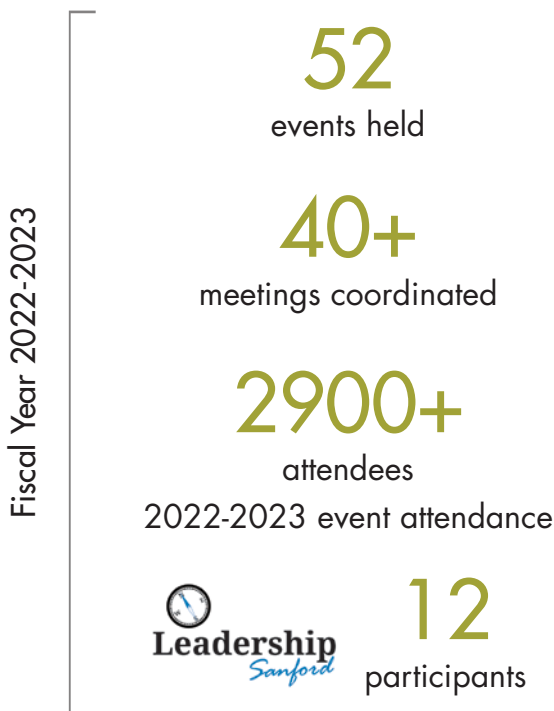
GOAL: PROVIDE EVENTS RESULTING IN BUSINESS GROWTH

Offering high-quality business gatherings has been a long time goal for the Chamber and, with the resources now available, SAGA conducts events which provide significant value and potential opportunity for business development. As a regular part of the SAGA activities, a variety of events are held to meet different business needs.

STRATEGIES:

- 🌀 Conduct monthly events to create a sense of community with business and industry
- 🌀 Host special events to provide networking opportunities to build relationships and create new contacts
- 🌀 Conduct SAGA Annual Meeting to provide business and industry recognitions and organizational updates
- 🌀 Organize and lead annual Leadership Sanford program

MEASURES:




Public Policy
luncheon
**Topics for your community
and business**

am
Buzz 
**Monthly Morning Networking
with coffee and sweets**

BUSINESS
after hours
Laid-back networking – Cheers!

 **ANNUAL
MEETING**

**Recognizing local industries, small
business leaders and accomplishments**



**Ready, Aim, Fire! Who's the best
shot in Sanford?**

GOAL: ADVOCACY FOR QUALITY OF LIFE INITIATIVES

SAGA’s recent activities in quality of life, through its predecessor entities, have existed as an organizational goal since the 2008 Lee County Second Century study. Directly related to economic development goals and requiring constant attention, these strategies are designed to attract higher quality development and the creation of a strong sense of place. SAGA’s leadership in educating the community about the benefits of the Parks and Recreation bonds proved successful with the voted approval by Lee County citizens.

STRATEGIES:

- ⌘ Create a task force for residential development
- ⌘ Advocate for amenity development
- ⌘ Support downtown development

MEASURES:

FY 2022 – 2023 Residential Subdivisions PRELIMINARY PLAT APPROVED STATUS*	Number of Units
SANFORD	1474
LEE COUNTY	26
BROADWAY	43

HIGHLIGHTS:



Library

The Lee County Libraries new building project was approved in 2021 and is expected to be completed in late 2025. With a current budget of \$24 million, the 33,400 sq. ft. building will serve as the new main library for Lee County located in OT Sloan Park. Creating a strong connection between the indoor and outdoor spaces was made a priority along with several additional attributes to benefit the Lee County community. The building will include: large multi-purpose room, Makerspace/STEAM Lab, meeting & study rooms, a larger children’s area with a dedicated programming room, a devoted teen area with gaming and study areas, larger display space for local art and library materials, additional staff/work space, information desks, curbside pick-up window, and more.

Multi-Sports Complex

A bond referendum was approved by voters in 2020 for \$25,000,000 for a Multi-Sports Complex that includes multiple diamond and rectangular fields. The Board of Commissioners approved allocating an additional \$15,000,000 due to inflation and cost estimates for the proposed design. The final design includes (3) 225’ youth baseball fields, (1) 400’ full size baseball field, (2) full size synthetic turf multi use fields, (8) 12U fields, (4) full size natural turf multi use fields, 12U fields, destination playground and picnic area, office / maintenance building, restrooms and a picnic shelter, and a walking trail.



GOAL: AGRICULTURAL DEVELOPMENT

New Farmers Market on the Horizon

The past year has been another exciting one for local agriculture in Lee County and the region. Plans continue to move forward on the Sanford Agricultural Marketplace, a 4.5-million-dollar collaborative project with the City of Sanford and N.C. Cooperative Extension - Lee County. The design phase of the downtown marketplace will conclude this fall, with an estimated project completion date slated for 2025. The vision is for this venue to be the premier agricultural hub of central North Carolina, a destination for regional growers, consumers, food entrepreneurs and out of town visitors.

As our current farmers market continues to thrive and expand, we have seen increased interest from folks looking to get into farming on various scales. Many of these individuals have ten acres or less and see a business opportunity for a “side hustle,” with others considering the possibility of transitioning to full-time agricultural and agribusiness operations. Due to this increased interest from potential new farmers, N.C. Cooperative Extension – Lee County Center launched its first ever “Small Farms Boot Camp” this past January. Forty-five participants took part in the eight-week program, learning the nuts and bolts of agriculture from the science of soils through how to successfully manage a small business. The response from participants was overwhelming, with program graduates citing increased knowledge, confidence, technical expertise and awareness of resources.

SAGA continues to be a strong ally for agriculture and agribusiness, recognizing the importance of maintaining balance in our agricultural heritage and sense of place with smart development and sustained economic growth. Over the past year, SAGA was actively involved with our 2023 Lee County Ag Week Land Use Summit and Stakeholder Breakfast, NC Plant Sciences Initiative Tour, as well as making agriculture a part of their “Leadership Sanford” agenda. I appreciate SAGA’s resolute commitment to agriculture in our region and look forward to future collaborative opportunities.

Dr. Bill Stone
Lee County Cooperative Extension Director



THANK YOU SAGA INVESTORS

We gratefully acknowledge the generous financial investment and strategic engagement from SAGA's private sector investors and stakeholders. Thank you!

Adcock Real Estate Services	Lee County Farm Bureau
Cargo Control USA	Lee Iron & Metal Company, Inc.
Carolina Commercial Contractors, LLC.	Lee-Moore Capital Company
Carter Bank & Trust	Mertek Solutions, Inc.
Caterpillar Inc.	Pilgrim's
Central Carolina Enterprise Park, LLC	Progressive Contracting Company, Inc.
Central Carolina Hospital	REAP Holdings, LLC
Central Electric Membership Corporation	Samet Corporation
Cherokee Investment Group	Sanford Contractors Inc.
Community Properties, Inc.	Sanford Honda
DMJPS CPAs & Advisors	Sanford Law Group
Dominion Energy	Scott Hadley
Dossenbach's Finer Furniture & Mattress Center	Static Control Components, Inc.
Duke Energy	Steel & Pipe Corporation
Enterprise Holdings	STI Polymer, Inc.
First Bank	The Normann Financial Group
First Citizens Bank	Trinity Capital
FirstHealth of the Carolinas	Truist
Forge Investment Group	West Financial Strategies, Inc.
Grace Christian School	Wilkinson Cadillac Chevrolet Buick GMC
Gross Farms	Wilson, Reives, Silverman, & Doran, PLLC
Helix Ventures LLC	

THANK YOU CHAMBER BOARD AND MEMBERS

We acknowledge the members of our Chamber Advisory Board and thank them for the time they dedicate to enhance our programs and events as well as the shared expertise that adds to the growth and success of our Chamber and its membership.

Margaret Robertson,
Chair

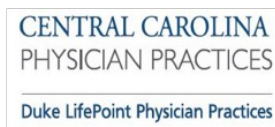
David Foster,
Co-Chair

Brenda Aguirre
Kelly Dubois
Amanda Jurisich
David Morse
Josh Payne
Karen Stanley
Clinton Weaver

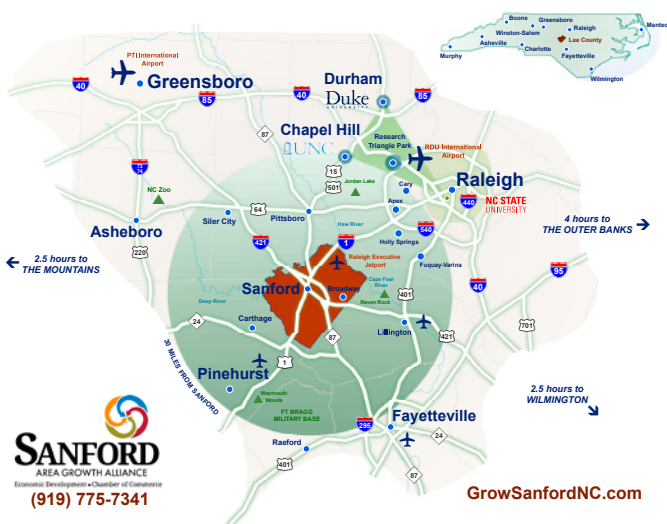
Linda Berryman
Gus Gomez
Roberto Montero
Ryan Murphy
Laura Powers
Ed Strickland
Cindy White

**Thank you to all the businesses who invest in Lee County
and the future of business in our community.**

CHAIRMAN LEVEL MEMBERS



Central Carolina Enterprise Park



- Available sites: 10-50 acres, NC Certified, **Shovel-Ready** in CCEP with **infrastructure**
- NEW **industrial shell building**, 117,000 sq. ft., **available now**
- Adjacent to US Hwy 1 Expressway, **15 mins to I-540** with direct access to RDU International Airport
- Over **496K workers** and 1.43M populations within 40-mile radius, including **Research Triangle Park**, **Fort Bragg** and **Pinehurst**

Infrastructure

Electric: Duke Energy

- Distribution Line - 24 kV
- Transmission Line - 230 kV

Natural Gas: Dominion

- Size of line - 8"
- Pressure of line - 55psi

Water Service: City of Sanford

- Nearest line size - 16" & 12"
- Available capacity - 1 MGD

Wastewater Treatment: City of Sanford

- Size of nearest line: 12"
- Available capacity - 1.2 MGD

Telecommunications: Randolph Telephone Telecommunications, Inc.

- Service available: Up to 10 Gbps via Fiber Optic